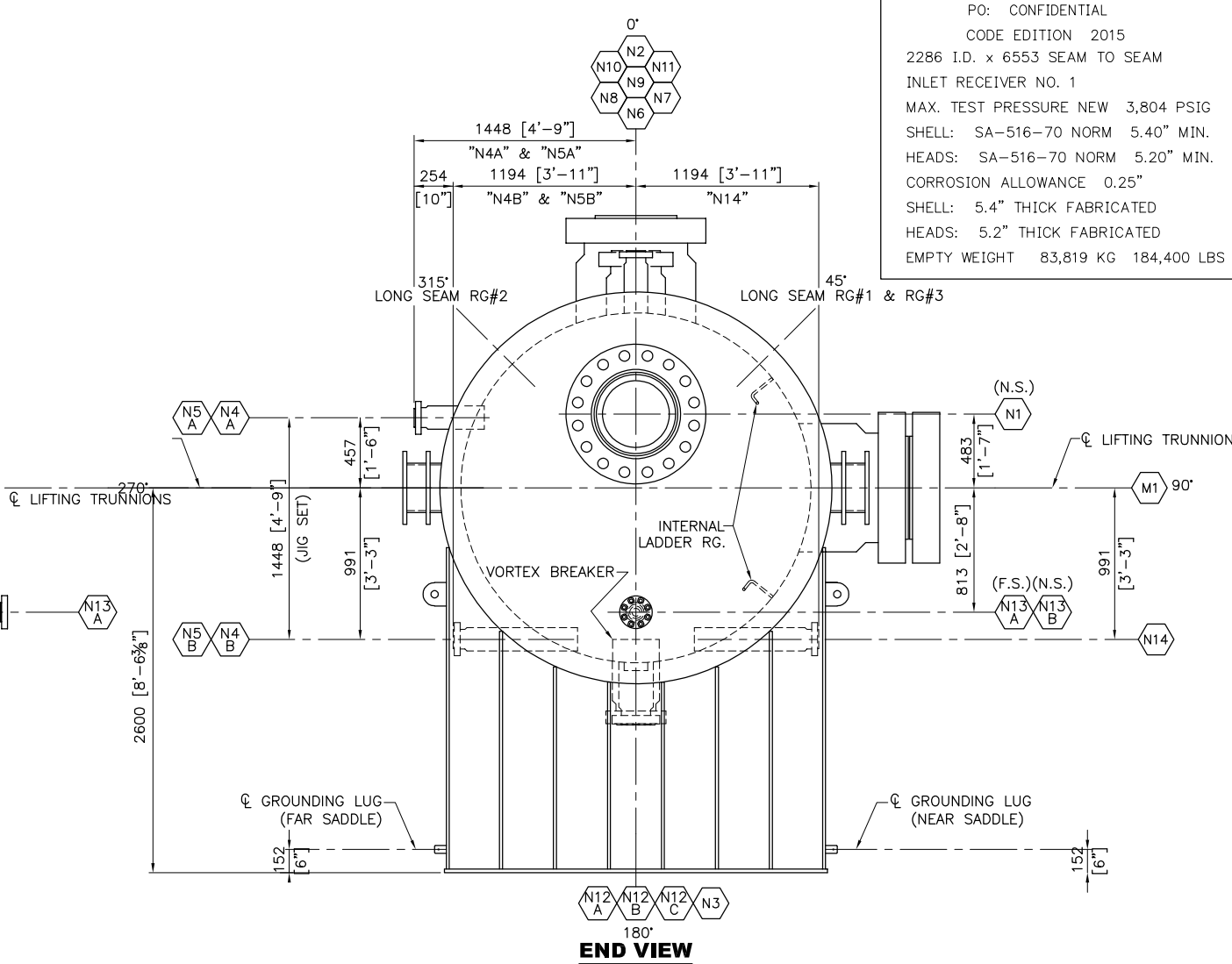
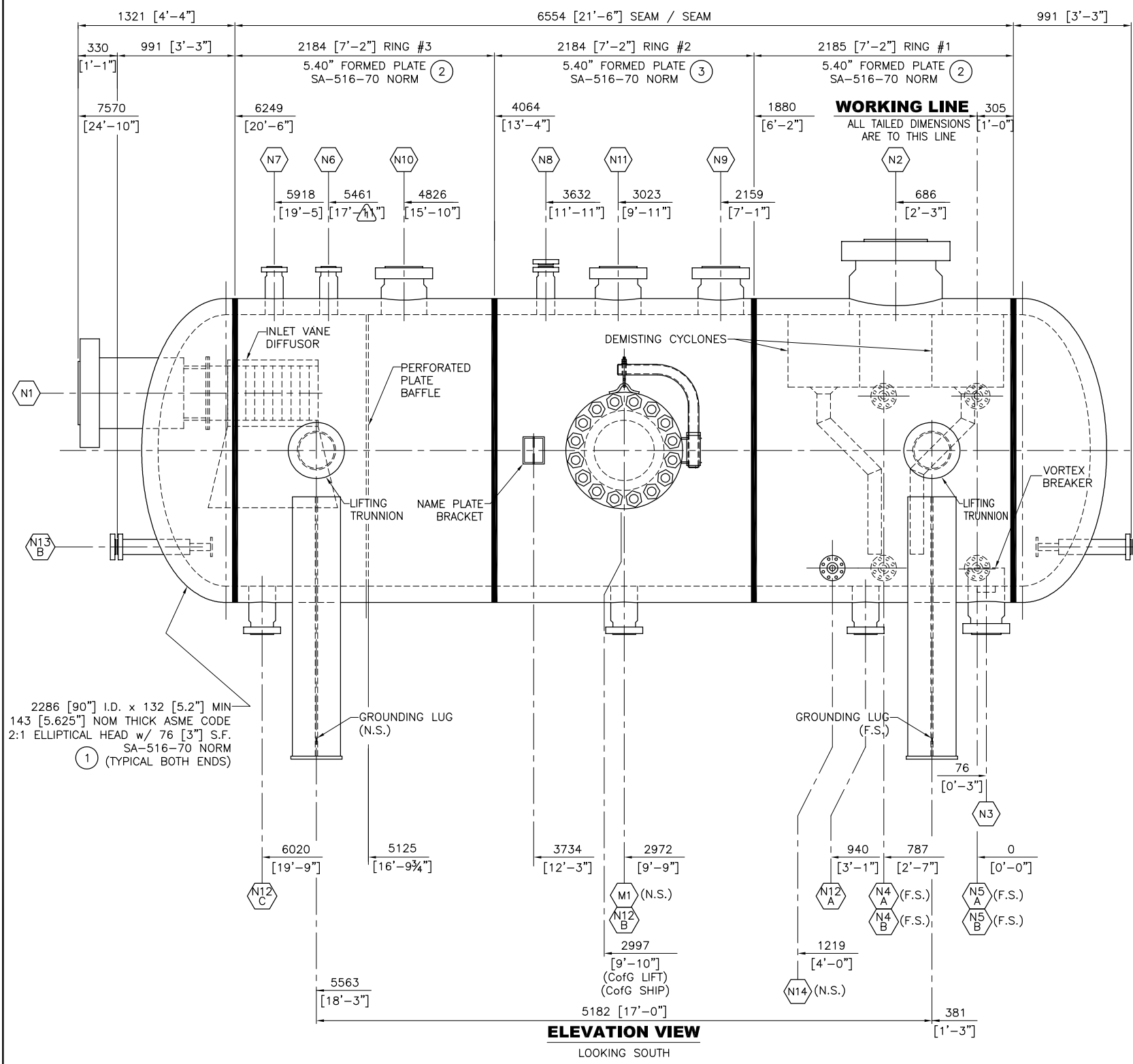


NATIONAL BOARD NUMBER "LATER"
 CERTIFIED BY: **GULFEX HOLDINGS, LLC**

MAWP (INT) 2,659 PSIG @ 120°F
 MAEP (EXT) FULL VAC @ 120°F
 MDMT -20°F @ 2,659 PSIG

U2 YEAR BUILT 2017
W SERIAL NUMBER 3207
 HT ITEM NO. CONFIDENTIAL
 PO: CONFIDENTIAL
 CODE EDITION 2015
 2286 I.D. x 6553 SEAM TO SEAM
 INLET RECEIVER NO. 1
 MAX. TEST PRESSURE NEW 3,804 PSIG
 SHELL: SA-516-70 NORM 5.40" MIN.
 HEADS: SA-516-70 NORM 5.20" MIN.
 CORROSION ALLOWANCE 0.25"
 SHELL: 5.4" THICK FABRICATED
 HEADS: 5.2" THICK FABRICATED
 EMPTY WEIGHT 83,819 KG 184,400 LBS



SHIPPING WEIGHT:
83,733 KGS [184,300LBS]

REVISED FOR FABRICATION
 DATE 12 MAY 2017

GULFEX HOLDINGS, LLC
 A DIVISION OF VESTEK INDUSTRIES
 PRESSURE VESSELS - CUSTOM FABRICATION
 P. O. BOX 12720 HOUSTON, TEXAS 77217
 TEXAS BOARD OF PROFESSIONAL ENGINEERS REGISTRATION No. F-8816

All design information, engineering & all other information, embodied in this drawing, and all attached drawings, is strictly confidential and property of GULFEX HOLDINGS, LLC. These documents are supplied with the understanding that they will be held confidentially and not disclosed to third parties, copies of this drawing without the prior written consent of GULFEX HOLDINGS, LLC is prohibited.

90" I.D. x 21'-6" SM/SM
 INLET RECEIVER NO. 1
 ITEM NUMBER MBD-1000

NO.	REVISION	BY	DATE	DATE	JOB NO.	SCALE	REVISION
1	REVISED AS NOTED	RTA	5/12/17	23 FEB 2017	3207	1=16	1
0	FOR FABRICATION	RTA	3/28/17				
A	FOR CLIENT APPROVAL	RTA	2/28/17				
				DRAWN	APPD.	DWG. NO.	
				R.T. ADAMS	K. CHANDLER		3207-3

END & ELEVATION VIEW