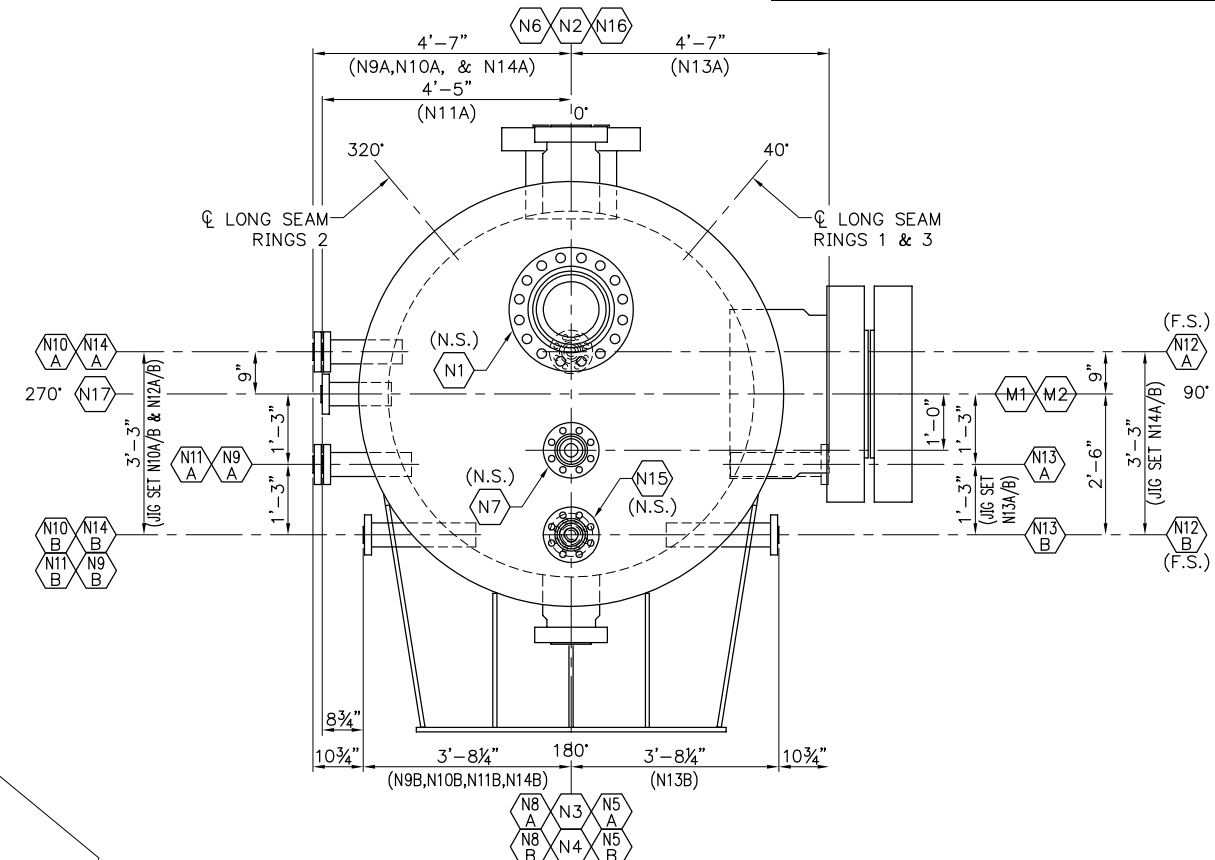
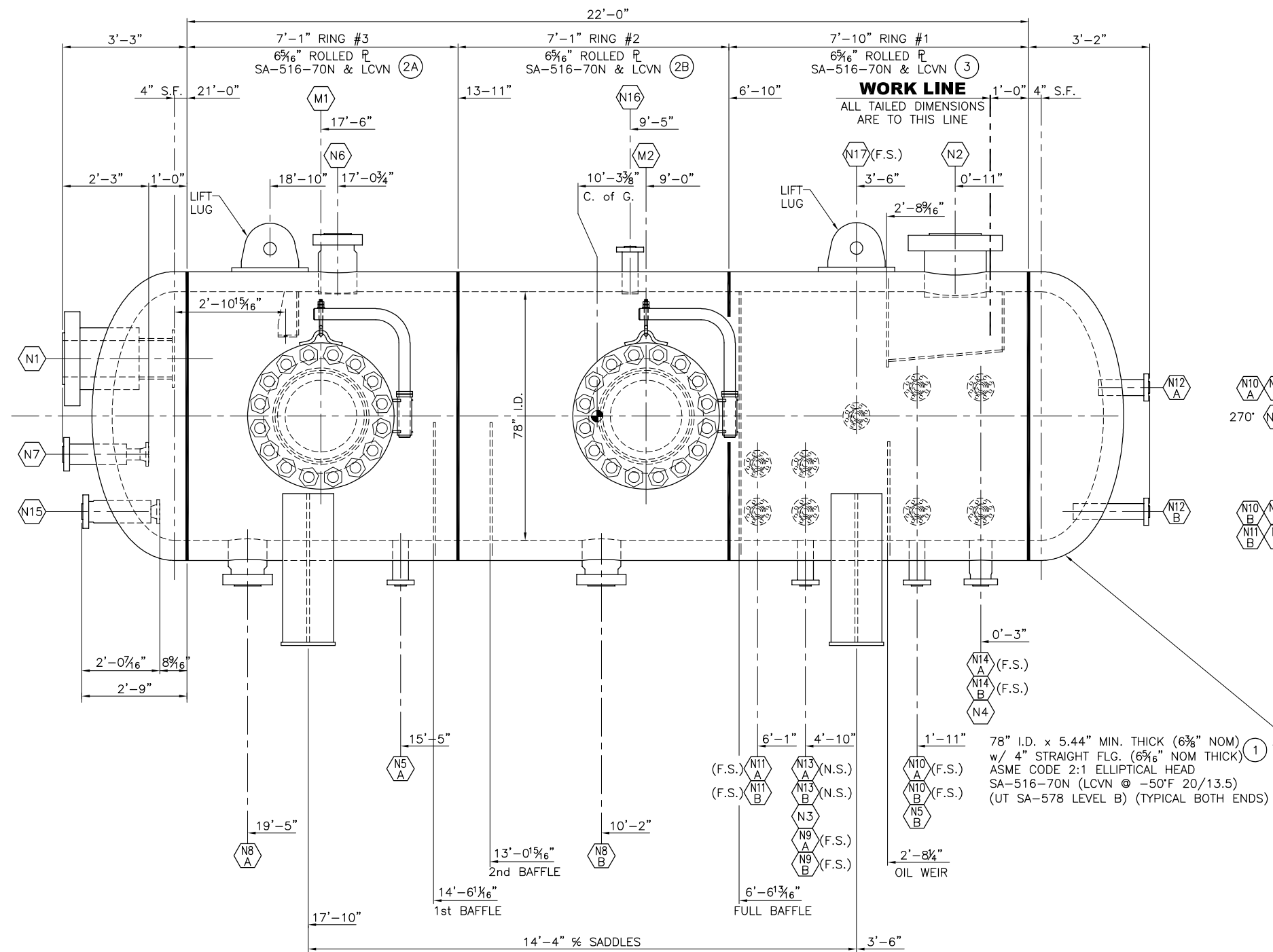


NATIONAL BOARD NUMBER CONFIDENTIAL  
 CERTIFIED BY: **GULFEX, LP**  
 MAWP (INT.) 3602 PSIG @ 120°F  
**U2** MDMT -50°F @ 3602 PSIG  
 HT YEAR BUILT 2013  
 SERIAL NUMBER 2866  
 ITEM CONFIDENTIAL  
 CUST. P.O. NO. CONFIDENTIAL  
 CODE 2010 ED. 2011 ADD  
 CUSTOMER CONFIDENTIAL  
 PROJECT CONFIDENTIAL  
 78" I.D. x 22'-0" SM/SM  
 GAS SEPARATOR  
 TEST PRESSURE 5152 PSIG  
 SHELL SA-516-70N 6.3125" THICK  
 HEADS SA-516-70N 5.44" MIN. THICK  
 CORROSION ALLOWANCE 0.125"  
 EST. DRY WEIGHT 191,792  
 EST. OPER. WEIGHT 201,636



**CERTIFIED AS BUILT**  
 DATE 13 MARCH 2013

|     |                        |     |         |
|-----|------------------------|-----|---------|
| 4   | AS BUILT               | RTA | 3/13/13 |
| 3   | AS BUILT               | RTA | 2/19/13 |
| 2   | ADD INT. & PER CLIENT  | RTA | 8/13/12 |
| 1   | not issued             |     |         |
| 0   | ISSUED FOR FABRICATION | RTA | 7/11/12 |
| A   | ISSUED FOR APPROVAL    | RTA | 2/28/12 |
| NO. | REVISION               | BY  | DATE    |

**GULFEX, LP**  
 METAL FABRICATORS  
 PRESSURE VESSELS - CUSTOM FABRICATION  
 P. O. BOX 12720 HOUSTON, TEXAS 77217  
 TEXAS BOARD OF PROFESSIONAL ENGINEERS REGISTRATION No. F-8816

78" I.D. x 22'-0" SEAM / SEAM  
 GAS SEPARATOR  
 ITEM CONFIDENTIAL  
 PROJECT: CONFIDENTIAL  
 END & ELEVATION VIEW

|       |            |         |             |          |      |          |        |
|-------|------------|---------|-------------|----------|------|----------|--------|
| DATE  | 2/13/12    | JOB NO. | 2866        | SCALE    | 1=16 | REVISION | 4      |
| DRAWN | R.T. ADAMS | APPD.   | W.B. SHEEHY | DWG. NO. |      |          | 2866-3 |